

EN Impact Test Table GT-M29

Product Introduction


Application:

Impact Test Apparatus is used for the impact testing in the situation that simulating the toy material or imitation protection device toys are misused. Determine after impacting whether small parts, hazardous sharp edges , hazardous sharp points or hazardous driving mechanisms have become accessible.

Standards:

EN 71-1;
ISO 8124-1;
ASTM F963

Dimensions

External Dimensions:	
Package Dimensions:	
Gross Weight:	
Net Weight:	

Test Range

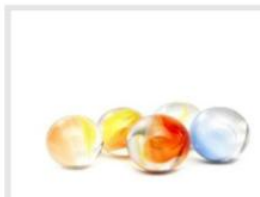
Glass toy or parts, toy or parts of expansion material, toy drive encapsulation shell, all the hard material masking on the face(goggles, a space helmet or welding mask), hard ball toy, the magnetic components can be reached of toy, the toys attached to the food, rattle toys and seams of plastic similar to toys.

Key Specifications

Model	GT-M29
Base plate size(L x W x H)	300 x 300 x 16mm
Impact height	0-140mm (Adjustable)
Impact hammer diameter	(80 ± 2)mm
Impact hammer mass	(1 ± 0.02)kg
Material	Stainless steel
Optional accessories	GT-MB01 Sharp Edge Tester GT-MB03 Small Part Cylinder GT-MB04 Sharp Point Tester GT-MB06 Accessibility Probe

Application Industry

All kinds of electric ride-on toys can be tested by the EN Impact Test Table.



Glass Toys



Space Helmet



Toys Package