

**SMA PIN Diode Switch SP2T From 12 GHz to 18 GHz Rated at +20 dBm**

FMSW6268 is a SINGLE POLE DOUBLE THROW (SPDT) REFLECTIVE PIN DIODE SWITCH that operates from 12 GHz to 18 GHz. Outstanding typical performance includes 2.5 dB insertion loss, > 70 dB isolation, and < 100 nsec switching speed. The design incorporates TTL compatible driver circuitry for accurate logic control. Operational temperature range is -55oC to +85oC and dual voltage controls of +5 Vdc and -15 Vdc are required. The rugged package is designed to meet a series of MIL-STD-202F environmental conditions including humidity, shock, vibration, and temperature cycle. Package interfaces include solder terminals and female SMA connectors.



**Electrical Specifications**

Description	Min	Typ	Max	Units
Frequency Range	12		18	GHz
Impedance		50		Ohms
VSWR			2:1	
Insertion Loss		2.5		dB
Isolation	70			dB
Switching Time			100	ns
Input Power (CW)			0.1	Watts
Survival Power			1	Watts
Positive Operating Voltage		5		V
Negative Operating Voltage		-15		V
Current @ 5 V		100		mA
Current @ -15 V		75		mA
Operating Temperature	-55		+85	deg C

**Mechanical Specifications**

Length	1 in [25.4 mm]
Width	1 in [25.4 mm]
Height	0.4 in [10.16 mm]
Finish	Blue

**Configuration**

Package Type	Connectorized Module
Design	SP2T, Reflective
RF Connector	SMA Female
Control Connector	Pin

**Environmental Specifications**

**Temperature**

Operating Range	-55 to +85 deg C
Storage Range	-65 to +125 deg C

Humidity	MIL-STD-202F, Method 103B, Condition B
Shock	MIL-STD-202F, Method 213B, Condition B
Vibration	MIL-STD-202F, Method 204D, Condition B

**Features:**

- SPDT Reflective Switch
- 12.0 GHz to 18.0 GHz
- Insertion Loss 2.5 dB typ
- Isolation 70 dB min
- Power Input 20 dBm CW max

**Applications:**

- Test & Measurement
- Military Communication
- Commercial Communication

Fairview Microwave  
 1130 Junction Dr. #100  
 Allen, TX 75013  
 Tel: 1-800-715-4396 / (972) 649-6678  
 Fax: (972) 649-6689  
[www.fairviewmicrowave.com](http://www.fairviewmicrowave.com)  
[sales@fairviewmicrowave.com](mailto:sales@fairviewmicrowave.com)

Altitude  
Temperature Cycling  
ESD Sensitivity

MIL-STD-202F, Method 105C, Condition B  
MIL-STD-202F, Method 107D, Condition A  
ESD Sensitive Material, Transport material in Approved ESD bags. Handle only in ESD Workstation.



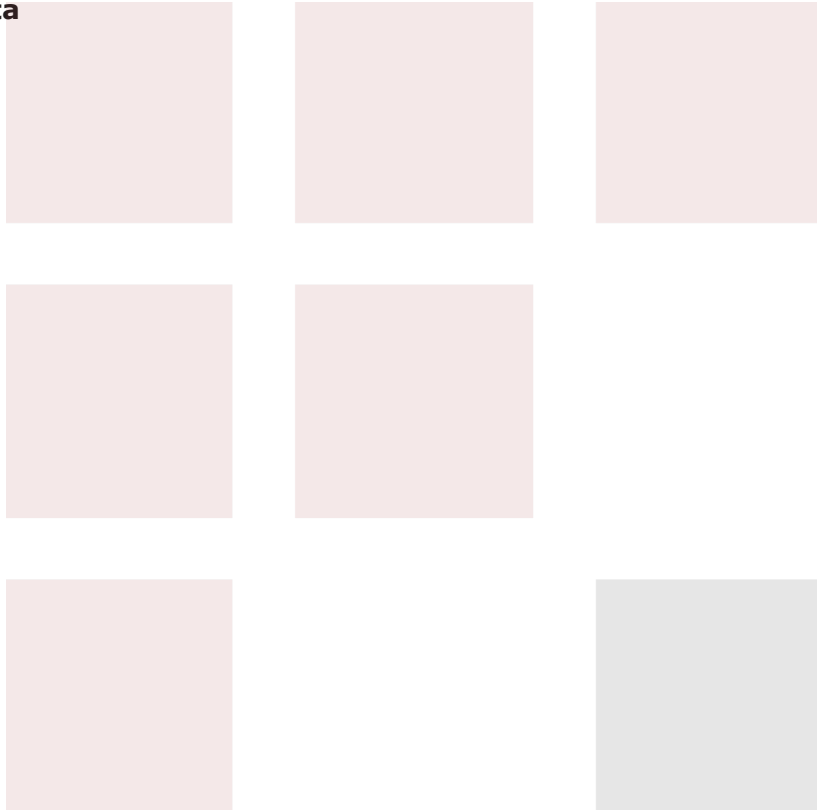
**Compliance Certifications** (visit [www.FairviewMicrowave.com](http://www.FairviewMicrowave.com) for current document)

REACH Compliant

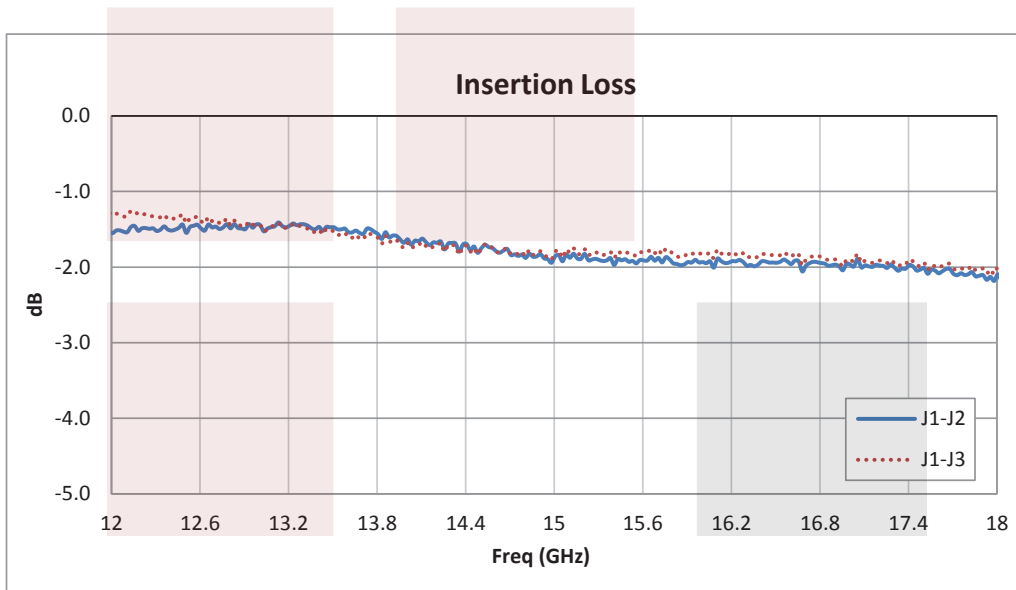
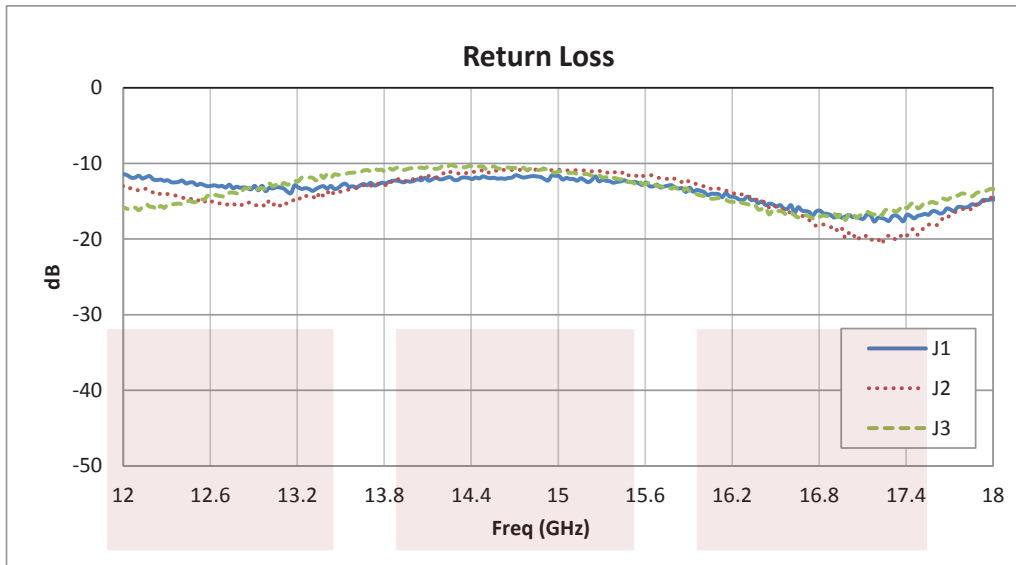
12/17/2015

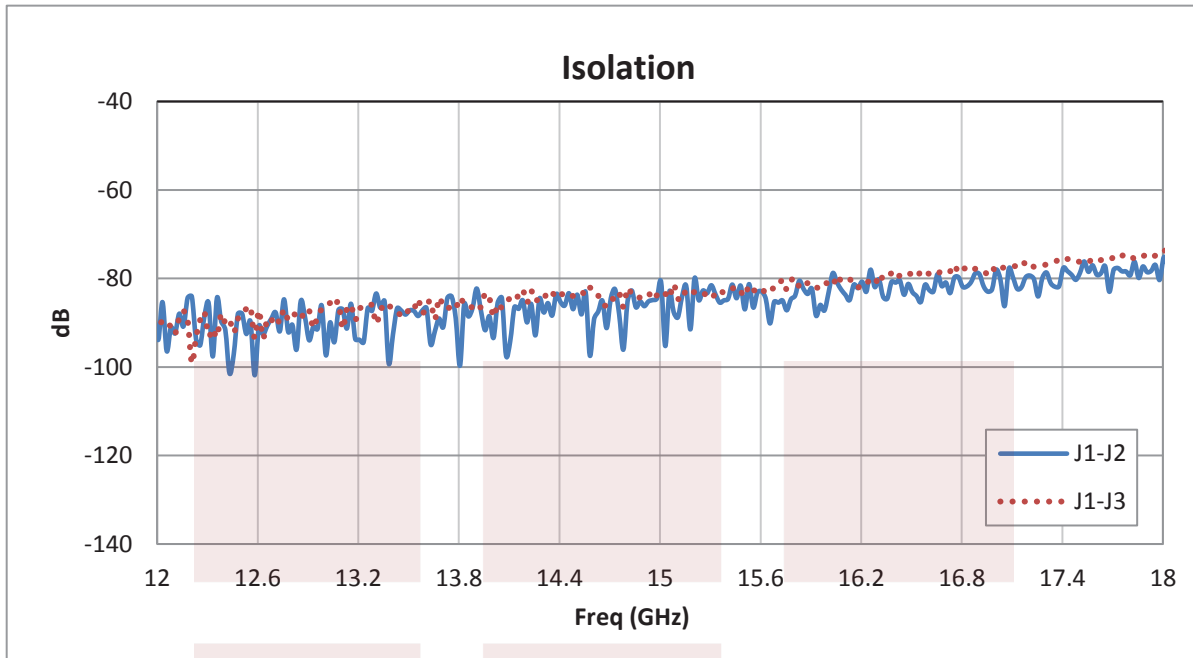
**Plotted and Other Data**

Notes:



**Typical Performance Data**



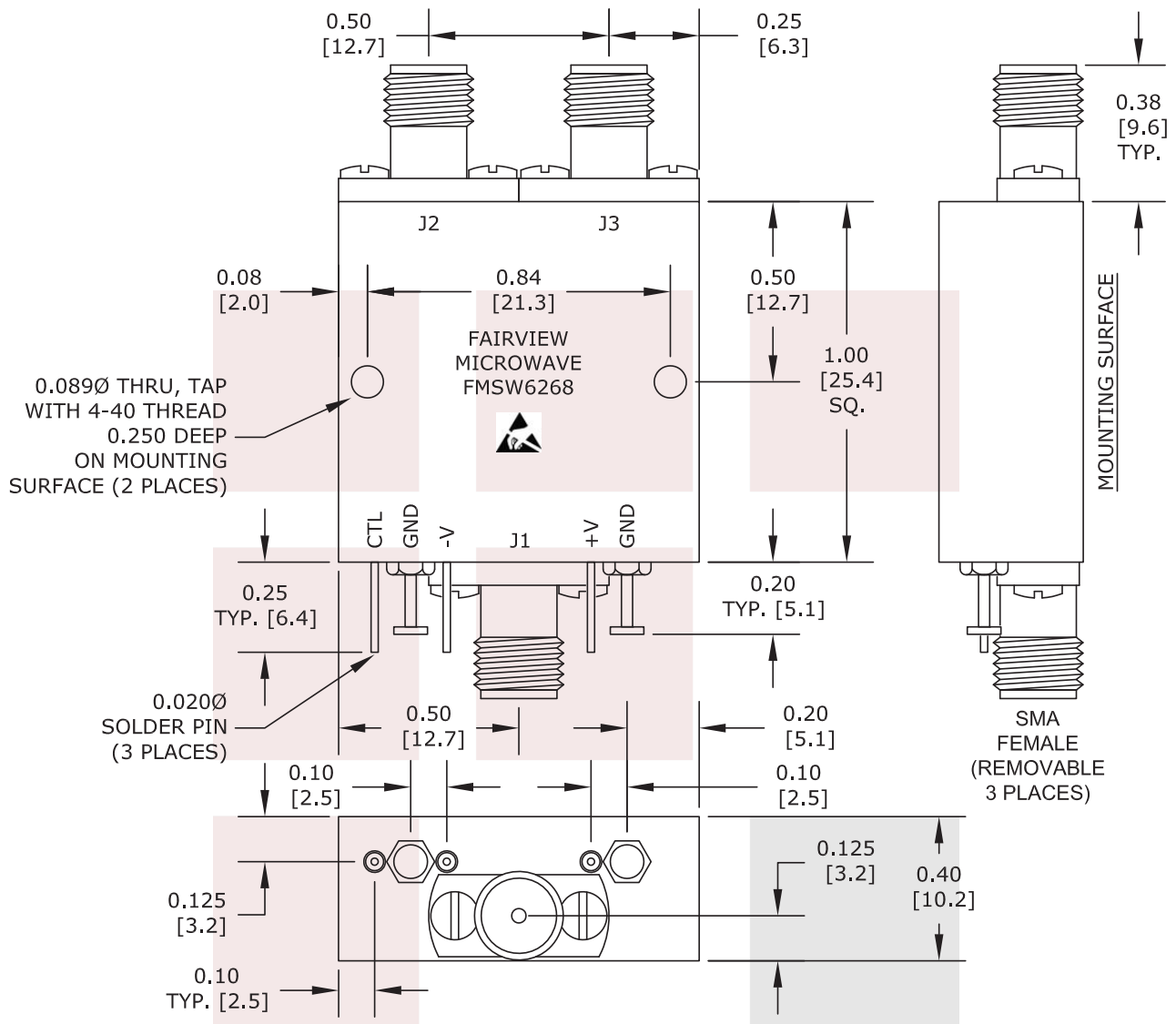


SMA PIN Diode Switch SP2T From 12 GHz to 18 GHz Rated at +20 dBm from Fairview Microwave is in-stock and available to ship same-day. All of our RF/microwave products are available off-the-shelf from our ISO 9001:2008 certified facilities in Allen, Texas. Fairview Microwave is RF on-demand.

For additional information on this product, please click the following link: [SMA PIN Diode Switch SP2T From 12 GHz to 18 GHz Rated at +20 dBm FMSW6268](http://www.fairviewmicrowave.com/sma-pin-diode-switch-sp2t-12-18-ghz-rated-20-dbm-fmsw6268-p.aspx)

URL: <http://www.fairviewmicrowave.com/sma-pin-diode-switch-sp2t-12-18-ghz-rated-20-dbm-fmsw6268-p.aspx>

The information contained in this document is accurate to the best of our knowledge and representative of the part described herein. It may be necessary to make modifications to the part and/or the documentation of the part, in order to implement improvements. Fairview Microwave reserves the right to make such changes as required. Unless otherwise stated, all specifications are nominal. Fairview Microwave does not make any representation or warranty regarding the suitability of the part described herein for any particular purpose, and Fairview Microwave does not assume any liability arising out of the use of any part or documentation.



LOGIC TABLE		
CTL	J1-J2	J1-J3
0	ON	OFF
1	OFF	ON

ALL DIMENSIONS ARE IN INCHES.  
TOLERANCES:  
X.XX ±0.020  
X.XXX ±0.010

\* THESE DIMENSIONS AND TOLERANCES SUPERSEDE NOTE #1 ON TITLE BLOCK.

<b>FAIRVIEW MICROWAVE INC.</b> ALLEN, TX 75013 WWW.FAIRVIEWMICROWAVE.COM		NOTES: 1. UNLESS OTHERWISE SPECIFIED ALL DIMENSIONS ARE NOMINAL. 2. ALL SPECIFICATIONS ARE SUBJECT TO CHANGE WITHOUT NOTICE AT ANY TIME. 3. DIMENSIONS ARE IN INCHES [mm].			
TITLE SMA PIN Diode Switch SP2T From 12 GHz to 18 GHz Rated at +20 dBm		DWG NO FMSW6268		CAGE CODE 3FKR5	
CAD FILE	020316	SHEET	SCALE	N/A	SIZE A 2233